



# Down the Rabbit Hole

MEASURING IMPLEMENTATION OF THE  
AZNN'S SCHOOL HEALTH STRATEGIES

# Today's Adventures in Evaluation Land



- Where are we?
- What are we doing?
- Where must we go?
- How do we get there?
- Questions?

“Well, after this I should think nothing of falling down stairs.”



# Where Are We?

EVALUATION OF SCHOOL HEALTH STRATEGY 12



# WellSAT-i 2.0 in the FFY16-18 Framework

- Measures PSE *implementation* for Strategies 10, 11 and 12.
- Aligns with WellSAT 2.0 that scores *written* LWPs
- Used in years 1, 3, 5 for strategy 12
- Used in years 2, 4 for strategies 10 and 11

Strategy Number	Description of Strategy	INTENDED REACH	PROCESS INDICATOR	STO (0-1 Yr) INDICATORS	MTO (2-3 Yrs) INDICATORS	LTO (3-5 Yrs) INDICATORS
12	Support comprehensive school physical activity programming (CSPAP)	Number of schools that will be reached (SART)	<p>Number of meetings with school and LEA leadership (SART)</p> <p>Phase I</p> <p>% of schools assessed (SART): # assessments completed # contacted for assessment</p> <p>Phase II</p> <p>Number of trainings and/or TA with schools on CSPAP (SART)</p> <p>Percent of schools reached that are provided TA and training on CSPAP (SART)</p>	<p>ST4 Baseline implementation score for PA, Year 1 (WellSAT-i 2.0, Section 4)</p> <p>ST4 Qualitative data re: the identification of opportunities related to CSPAP (SARN)</p> <p>ST4 ↔ strategy 10 Evaluation Team uses baseline Score for PE and PA in LWPs, Year 1 (WellSAT 2.0, Section 4)</p>	<p>MT5 Qualitative data re: adoption of PA supports (SARN)</p> <p>MT5 Implementation score for PA, Year 3 (WellSAT-i 2.0, Section 4)</p> <p>MT5 ↔ strategy 10 Evaluation Team uses score for PE and PA in LWPs, Year 3 (WellSAT 2.0, Section 4)</p>	<p>LT10 Mastery-level implementation score for PA, Year 5 (WellSAT-i 2.0, Section 4)</p> <p>LT10 ↔ strategy 10 Evaluation Team uses score for PE and PA in LWPs, Year 5 (WellSAT 2.0, Section 4)</p>

# The Riddle

What if schools are involved in other efforts, like the Healthy Schools Program?

- ? Would WellSAT-i 2.0 interviews be providing duplicate information?
- ? Would contractors already have conducted interviews?
- ? Would schools be less willing to participate?
- ? To what extent is this an issue across Contractors?

**ENTER... THE CONTRACTOR SURVEY**

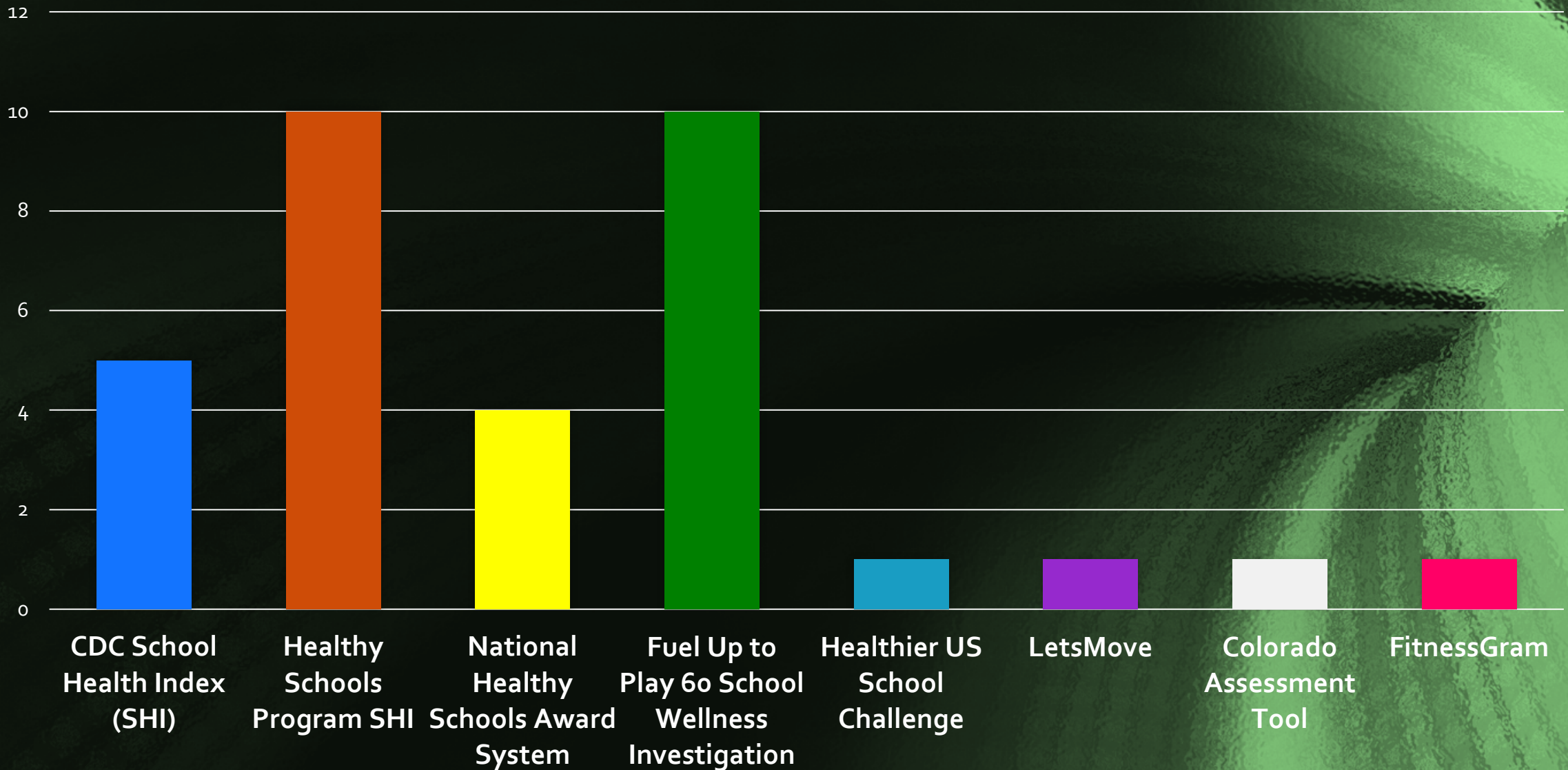




# What Are We Doing?

RESULTS OF THE CONTRACTOR SURVEY

# Do your schools use or plan to use...



# Do contractors have access to data?

**CDC School Health Index (SHI)**

- 40% have online access

**Healthy Schools Program SHI**

- 44% have online access

**National Healthy Schools Award System**

- 25% have login access
- 100% should have award access

**FUTP6o School Wellness Investigation**

- 11% have online access





# Do contractors have other feedback?

“Multiple scenarios exist at varying degrees of progress and intention.”

“One of our schools has a bronze-level award. One of our schools participates in the Fuel Up to Play 60 grant. One of our school districts is piloting the ADHS Empower Plus School Standards. One of our schools has just started the CDC SHI modules.”

“The wellness coordinators we talked with do not want to do an 8 module assessment... Districts like the flexibility given to them by ADE to choose the assessment tool that best fits their needs.”

“Some partners have found the Healthy Schools Program assessment to be more user-friendly than the SHI. Our County’s Health Department HAPI Program emphasizes the SHI only.”



# Where Must We Go?

MEETING THE NEEDS OF ALL PRIORITY USERS



CDC Coordinated School  
Health Model

Alliance for a Healthier  
Generation

Let's Move! Initiative

USDA Healthier US School  
Challenge (HUSSC)

National Dairy Council & NFL  
Fuel Up to Play 60 (FUTP60)

Main Initiatives



CDC Coordinated School  
Health Model

CDC School Health Index (SHI)

Alliance for a Healthier  
Generation

Let's Move! Initiative

USDA Healthier US School  
Challenge (HUSSC)

National Dairy Council & NFL  
Fuel Up to Play 60 (FUTP60)

Initiatives' Tools



CDC Coordinated School Health Model

CDC School Health Index (SHI)

Alliance for a Healthier Generation

Alliance's Healthy Schools Program (HSP)

HSP SHI (Nutrition & PA)

National Healthy Schools Award System

Let's Move! Initiative

USDA Healthier US School Challenge (HUSSC)

National Dairy Council & NFL Fuel Up to Play 60 (FUTP60)



# Initiatives' Tools

CDC Coordinated School Health Model

CDC School Health Index (SHI)

Alliance for a Healthier Generation

Alliance's Healthy Schools Program (HSP)

HSP SHI (Nutrition & PA)

National Healthy Schools Award System

Let's Move! Initiative

Alliance's *Let's Move!* Active Schools (PE/PA from HSP)

*Let's Move!* PA Assessment

*Let's Move!* PA Award System

USDA Healthier US School Challenge (HUSSC)

National Dairy Council & NFL Fuel Up to Play 60 (FUTP60)

# Common Links

CDC Coordinated School Health Model

CDC School Health Index (SHI)

Alliance for a Healthier Generation

Alliance's Healthy Schools Program (HSP)

HSP SHI (Nutrition & PA)

National Healthy Schools Award System

Let's Move! Initiative

Alliance's *Lets Move!* Active Schools (PE/PA from HSP)

*Let's Move!* PA Assessment

*Let's Move!* PA Award System

USDA Healthier US School Challenge (HUSSC)

HUSSC Award System

National Dairy Council & NFL Fuel Up to Play 60 (FUTP60)

# Common Links



CDC Coordinated School Health Model

CDC School Health Index (SHI)

Alliance for a Healthier Generation

Alliance's Healthy Schools Program (HSP)

HSP SHI (Nutrition & PA)

National Healthy Schools Award System

Let's Move! Initiative

Alliance's *Lets Move!* Active Schools (PE/PA from HSP)

*Let's Move!* PA Assessment

*Let's Move!* PA Award System

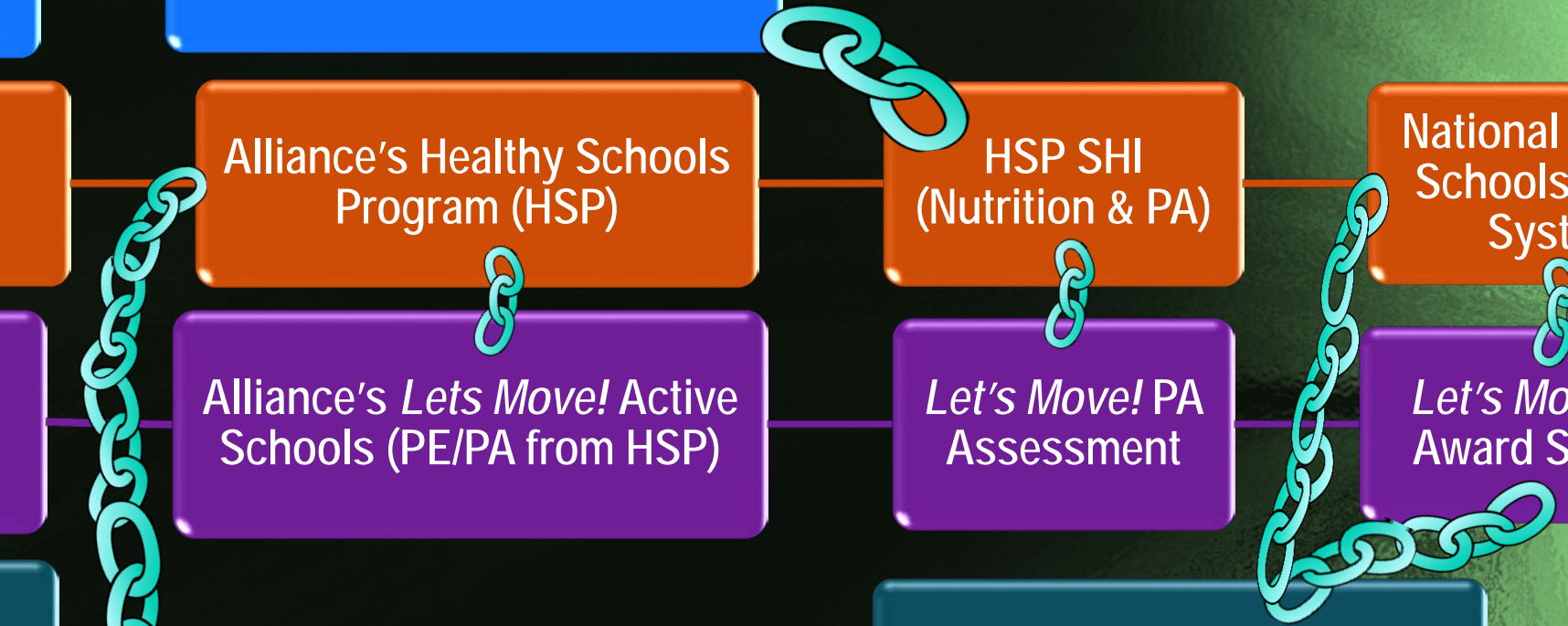
USDA Healthier US School Challenge (HUSSC)

HUSSC Award System

National Dairy Council & NFL Fuel Up to Play 60 (FUTP60)

FUTP60 School Wellness Investigation (Nutrition & PA)

# Common Links





# What do we do to meet evaluation needs of Schools, Districts, Contractors and the AzNN?

**Consistency:** Use one AzNN tool despite the many used at schools

**Feasibility:** Minimizes redundancy and workloads, practical

**Ease of Use:** Not confusing for contractors

**Utility:** All priority users get useful information

**Accuracy:** Evidence-based, sound data collection

*"Begin at the beginning," the King said, very gravely, "and go on till you come to the end: then stop."*

# Advice from a Caterpillar

- Choose the program with the most links
  - [HEALTHY SCHOOLS PROGRAM](#)
- Choose the least burdensome tool that meets your needs
  - [HSP NATIONAL HSP AWARD SYSTEM CHECKLIST](#)
- Make it an easy transition
  - [NOTHING NEEDS TO BE UNLEARNED](#)
  - [LESS NEEDS TO BE DONE](#)





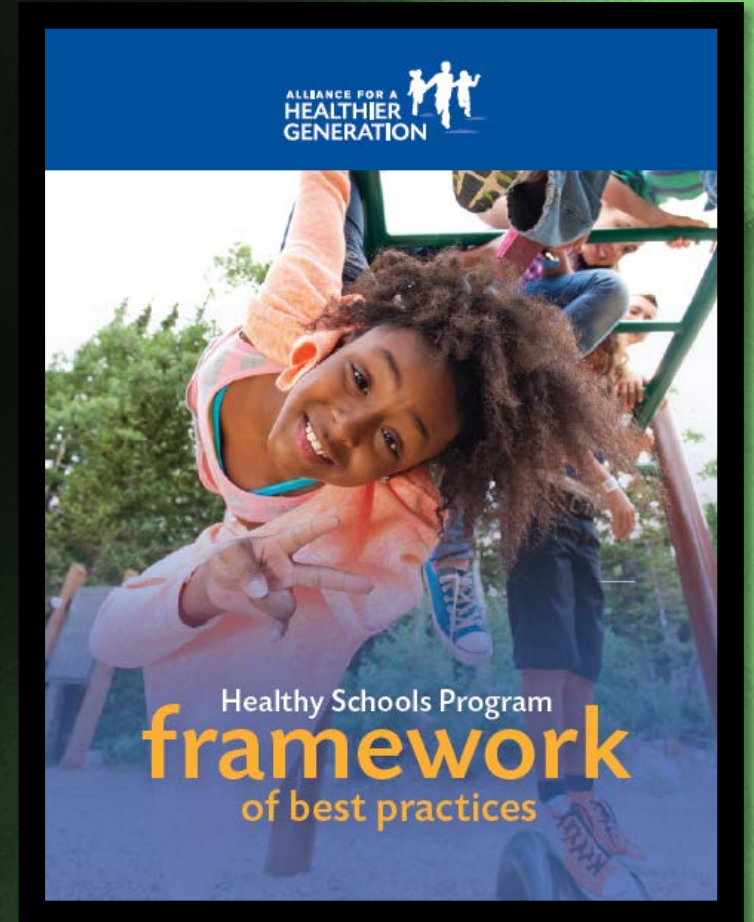
# How Do We Get There?

REVISION TO THE AZNN EVALUATION FRAMEWORK

“Off with their heads!”

# Revised Framework

- The **National Healthy Schools Award Checklist (NHSAC)**
- Replaces WellSAT-*i* 2.0 for *all* School Health strategies, 10-12
- Strategy 12 implementation measurement now aligns with strategies 10 and 11 to start in FY17
- WellSAT 2.0 remains as is

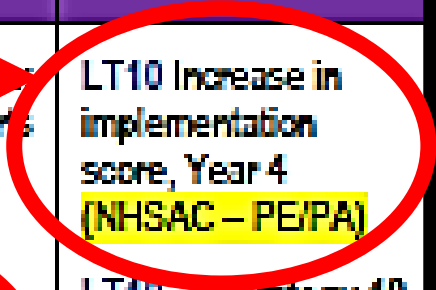


# Revised Framework

Strategy Number	Description of Strategy	INTENDED REACH	PROCESS INDICATOR	STO (0-1 Yr) INDICATORS	MTO (2-3 Yrs) INDICATORS	LTO (3-5 Yrs) INDICATORS
12	Support comprehensive school physical activity programming (CSPAP)	Number of schools that will be reached (SART)	<p>Number of meetings with school and LEA leadership (SART)</p> <p>Phase I</p> <p>% of schools assessed (SART):</p> <p># assessments completed</p> <p># contacted for assessment</p> <p>Phase II</p> <p>Number of trainings and/or TA with schools on CSPAP (SART)</p> <p>Percent of schools reached that are provided TA and training on CSPAP (SART)</p>	<p>ST4 Qualitative data re: the identification of opportunities related to CSPAP (SARN)</p> <p>ST4 ↔ strategy 10 Evaluation Team uses baseline Score for PE and PA in LWPs, Year 1 (WellSAT 2.0, Section 4)</p>	<p>MT5 Qualitative data re: adoption of PA supports (SARN)</p> <p>MT5 Implementation score, Year 2 (NHSAC – PE/PA)</p> <p>MT5 ↔ strategy 10 Evaluation Team uses score for PE and PA in LWPs, Year 3 (WellSAT 2.0, Section 4)</p>	<p>LT10 Increase in implementation score, Year 4 (NHSAC – PE/PA)</p> <p>LT10 ↔ strategy 10 Evaluation Team uses score for PE and PA in LWPs, Year 5 (WellSAT 2.0, Section 4)</p>

# Old vs. New Framework

STO (0-1 Yr) INDICATORS	MTO (2-3 Yrs) INDICATORS	LTO (3-5 Yrs) INDICATORS	STO (0-1 Yr) INDICATORS	MTO (2-3 Yrs) INDICATORS	LTO (3-5 Yrs) INDICATORS
ST4 Baseline implementation score for PA, Year 1 (WellSAT-i 2.0, Section 4)	MT5 Qualitative data re: adoption of PA supports (SARN)	LT10 Mastery-level implementation score for PA, Year 5 (WellSAT-i 2.0, Section 4)	ST4 Qualitative data re: the identification of opportunities related to CSPAP (SARN)	MT5 Qualitative data re: adoption of PA supports (SARN)	LT10 Increase in implementation score, Year 4 (NHSAC - PE/PA)
ST4 Qualitative data re: the identification of opportunities related to CSPAP (SARN)	MT5 Implementation score for PA, Year 3 (WellSAT-i 2.0, Section 4)	LT10 ↔ strategy 10 Evaluation Team uses score for PE and PA in LWPs, Year 5 (WellSAT 2.0, Section 4)	ST4 ↔ strategy 10 Evaluation Team uses baseline Score for PE and PA in LWPs, Year 1 (WellSAT 2.0, Section 4)	MT5 Implementation score, Year 2 (NHSAC - PE/PA)	LT10 ↔ strategy 10 Evaluation Team uses score for PE and PA in LWPs, Year 5 (WellSAT 2.0, Section 4)
ST4 ↔ strategy 10 Evaluation Team uses baseline Score for PE and PA in LWPs, Year 1 (WellSAT 2.0, Section 4)	MT5 ↔ strategy 10 Evaluation Team uses score for PE and PA in LWPs, Year 3 (WellSAT 2.0, Section 4)			MT5 ↔ strategy 10 Evaluation Team uses score for PE and PA in LWPs, Year 3 (WellSAT 2.0, Section 4)	



# A Sneak Peek

- Contractors can simply *transfer information* in cases where schools have achieved awards
- Contractors can also transfer information in cases where they have access to assessments
- Otherwise, completing checklists may include brief interviews and/or school visits

## BEST PRACTICES FOR Physical Education & Other Physical Activity Programs

### BRONZE & LET'S MOVE! ACTIVE SCHOOLS

- ❑ **Minutes of physical education per week (Elementary only):** All students in each grade receive physical education for at least 60-89 minutes per week throughout the school year.
- ❑ **Years of physical education (Middle and High only):** Students are required to take the equivalent to one-half academic year of physical education.
- ❑ **Sequential physical education curriculum consistent with standards:** All teachers of physical education use an age-appropriate, sequential physical education curriculum that is consistent with national or state standards for physical education (see National Standards).
- ❑ **Health-related physical fitness:** The school's physical education program integrates all of the following components of the Presidential Youth Fitness Program:
  - Fitness assessment using Fitnessgram®
  - Professional development for physical education teachers on proper use and integration of fitness education, fitness assessment, and recognition
  - Recognition of students meeting Healthy Fitness Zones or their physical activity goals

### NATIONAL STANDARDS FOR PHYSICAL EDUCATION

#### A PHYSICALLY LITERATE INDIVIDUAL:

1. Demonstrates competency in a variety of motor skills and movement patterns.
2. Applies knowledge of concepts, principles, strategies, and tactics related to movement and performance.
3. Demonstrates the knowledge and skills to achieve and maintain a health-enhancing level of physical activity and fitness.
4. Exhibits responsible personal and social behavior that respects self and others.
5. Recognizes the value of physical activity for health, enjoyment, challenge, self-expression, and/or social interaction.

# Value Added

- Interested Contractors can help schools pursuing national recognition
- Contractors can also let schools know if they would qualify for an award level





# What To Do Now?

- Your Evaluation Team point-of-contact has (or will) email you a revised framework
- Look forward to the FY17 training on the NHSAC
- Meanwhile? All Contractors can focus on programming!

*“If you knew Time as well as I do,” said the Hatter, “you wouldn’t talk about wasting it.”*



# Questions?

"Never imagine yourself not to be otherwise than what it might appear to others that what you were or might have been was not otherwise than what you had been would have appeared to them to be otherwise."



# THANK YOU!

A post-training survey will be emailed to all attendees.

Theresa LeGros

[drejza@email.arizona.edu](mailto:drejza@email.arizona.edu)

Laurel Jacobs

[jacobsl@email.Arizona.edu](mailto:jacobsl@email.Arizona.edu)

Kay Orzech

[kmcelvee@email.arizona.edu](mailto:kmcelvee@email.arizona.edu)



# Images and Quotes



- Quotes and sketch images in this presentation are borrowed from *Alice's Adventures in Wonderland* (1865), written by Lewis Carroll and illustrated by John Tenniel, and are considered public domain.
- All movie images in this presentation are from the 2010 “*Alice in Wonderland*” film directed by Tim Burton and are considered fair use.

